



Choices
Flooring

choicesflooring.com

the abode

COLLECTION

NEW ZEALAND

abode



WHY CHOOSE ABODE?

Often referred to as rigid flooring or hybrid flooring, Abode is an evolution in hard flooring which has the visual appearance of timber, yet combines the best attributes of laminate and luxury vinyl.

Abode is quick and easy to install, with minimal to no subfloor preparation. It is exceptionally resistant to scuffs, scratches and stains, making it a perfect choice for those with busy households as it provides style and durability for everyday living.



rigid/hybrid

CHOICES

abode

2	Before You Buy
4	Abode Care & Maintenance Guide
9	Abode Alpha
13	Abode Derwent
17	Abode Grace
21	Abode Grande
25	Abode Vibe
29	Key Features
30	Guarantees & Warranties

ABODE VIBE
Colour Featured:
Oxford Oak

BEFORE YOU BUY

Throughout this brochure you may notice a colour variation between the room and swatch images. Both are the best possible representation of that product within two different photographic environments. It is important to keep in mind that there are a number of variances in addition to lighting that may affect the way your hard flooring looks. This can include paint colour on walls, furniture and décor items that can alter the appearance of your floors.

HOW LIGHTING AFFECTS THE LOOK OF YOUR FLOOR

Flooring is one of the biggest surface areas in your home and a key design element to any interior. When selecting your hard flooring, colour plays just as much of an important role as price, style and quality.

It is important to take into consideration how your selected hard flooring may look once it is installed in your home as the lighting in the room will have a significant impact on the way the colour is perceived.

For example, hard flooring that is laid in a room that receives little to no natural light will appear drastically different to a room that has a lot of natural light coming in. It will also appear different as the light changes throughout the day and transitions from morning to night.

THE EFFECTS OF ARTIFICIAL LIGHTING

Natural sunlight is not the only lighting that has an impact on the colour of your hard flooring; the type of light fixtures you have in the room will also play a part in how the hard flooring will look in your room.

Indirect lighting, such as a wall bracket aims light toward ceilings or walls, whereas a lampshade or floor lamp has a wider spread of light, therefore the light displayed will rebound against walls and floor.

For the best representation, we recommend going into your local Choices Flooring store and request to take a sample of your desired colour home. In addition, take a sample that is a shade darker so you can compare the two shades in both natural and artificial light at various times throughout the day to ensure you are happy with the true colour of the product within your room.



The actual swatch appears most like the mid to dark sections of the room image.



Depending on the sheen and texture of the product, under natural light your flooring can appear drastically lighter.



Wall colour and furniture can appear to change the tone of your flooring due to colour reflection.

For more information, visit [choicesflooring.com](https://www.choicesflooring.com) or speak with your sales consultant at your local Choices Flooring store.

ABODE CARE & MAINTENANCE GUIDE

Abode has been designed with low maintenance in mind, allowing you to spend more time doing the things you love. A key benefit of Abode flooring is how easy it is to clean, and with little maintenance, you can extend the life of your floor for years to come. The nature of the maintenance will depend on the amount and type of traffic in your home. A typical maintenance program for a standard home would be as follows:

INITIAL TREATMENT

Maintain a temperature controlled environment between 18°C – 28°C and do not wash your new floor for at least 24 hours after installation. Sweep with a broom or vacuum to remove any grit and dirt. This will avoid scratching your floor prior to implementing the recommended maintenance schedule.

REMOVING SCUFF MARKS

Scuff marks on surface areas are usually caused by dragging heavy items such as furniture or sliding shoes across the floor. These can be just wiped away with a damp cloth. If you are having difficulties removing scuff marks, add some eucalyptus oil to a damp cloth and wipe scuff marks to remove any residue.

WEEKLY CARE

Sweep daily or as often as required with a broom or vacuum to remove any grit or dirt. At least twice a month, mop the entire floor with a pH neutral cleaning product. The minimum amount of water/liquid should be used to prevent moisture from penetrating into joints. Check with your Choices Flooring sales consultant which cleaning product is most appropriate for your floor.



For more information regarding the care & maintenance of your flooring, visit [choicesflooring.com](https://www.choicesflooring.com)





abode

The next evolution in flooring.

Boasting stunning timber designs that provide the flexibility to be installed throughout most of your home, embrace the next evolution in flooring with the Abode collection.

FEATURED BRANDS

abode
alpha

abode
derwent

abode
grace

abode
grande

abode
vibe

ABODE NOBLE
Colour Featured:
Limed Chestnut



Swatch colour and room image can differ due to light conditions. Refer to page 2.



Discover the new benchmark in flooring.

From modern grey hues to classic oaks, Abode Alpha has it all – style, durability and budget friendly, making it a great option for any home. It is an exceptional, solid-core plank designed to withstand up to 50° heat without lifting or warping. You can rest assured it will perform brilliantly in your home throughout the hottest summers.

CURRENT COLLECTION



BUNYIP BLACKBUTT



CALDWELL OAK



GILLII GUM



KINGLAKE OAK



TARKINE OAK



TONGRASS OAK

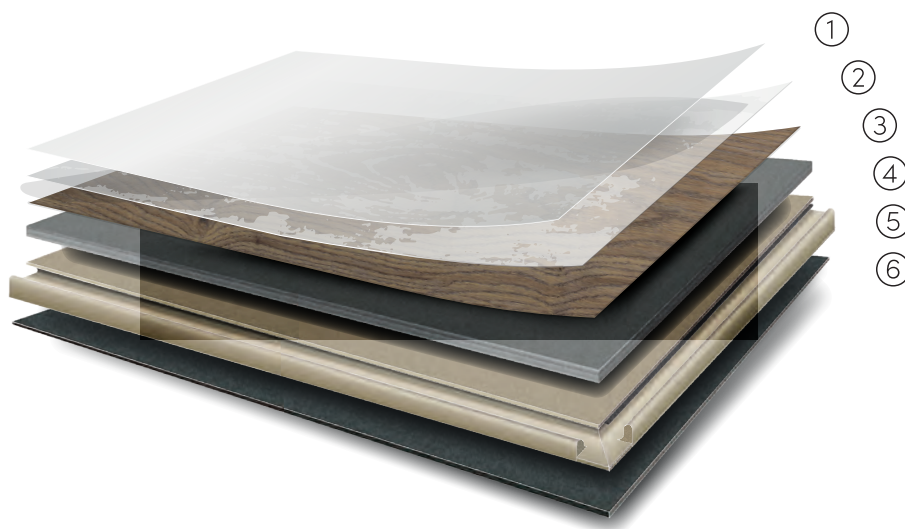


WANDELLA OAK



WAVERLEY OAK

HOW IT'S MADE



① Surface protection

Surface protection system uses PU technology to provide a hygienic and durable finish.

② Clear PVC embossed wear layer

Provides superior protection from everyday wear and tear.

③ High definition photographic layer

Showcasing the unique design of each product; handcrafted for one of a kind beautiful floors.

④ Core

The binder in the core is composed of 100% PVC (no wood floor) to ensure stronger, more stable core for installation over most existing hard floors without the worry of exposing subfloor imperfections.

⑤ 5G® click-locking mechanism

Using a single action installation method, the 5G® click-locking mechanism allows the installer to quickly click and lock planks together.

⑥ Acoustic backing

Pre-attached acoustic foam backing makes it quieter to walk on than laminate floors and reduces noise transfer to rooms below.

SPECIFICATIONS

Board dimensions: 1,520mm x 228mm

Pieces per carton: 6

Area per carton: 2.079m²

Wear layer: 0.5mm

Surface: PU (Polyurethane)

Slip resistance: P3

Thickness: 6mm





Switch colour and room image can differ due to light conditions. Refer to page 2.

A harmonious blend of elegance and durability.

Inspired by the picturesque landscapes of old English masters, this collection combines the best of both worlds – the natural timber beauty found in lush forests and the resilience of modern technology.

CURRENT COLLECTION



BOWEN
SPOTTED GUM



DELAMERE
OAK



GISBURN
OAK



KIELDER
OAK



MARRON
BLACKBUTT



MERCIA
OAK



MERSEY
OAK



MORTIMER
OAK

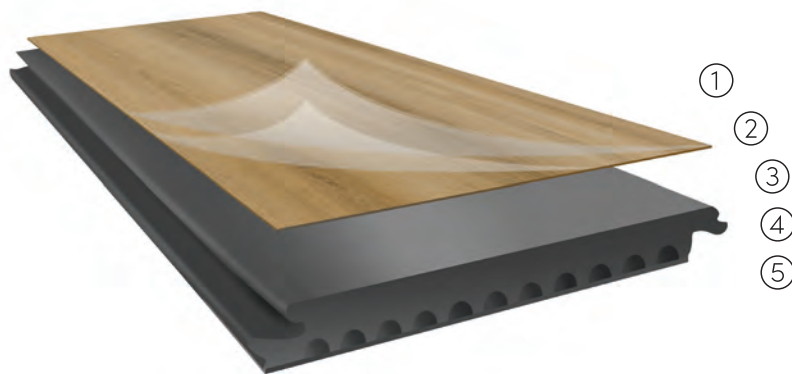


ST CLAIR
BLACKBUTT



WELLINGTON
OAK

HOW IT'S MADE



① Multi-layer Quartz enhanced PUR coating

Exceptional resistance to heavy foot traffic, indents, scratches and scuffs.

② Stunning photographic layer

Super sharp images of the finest timber species for genuine timber appearance.

③ New extra dense rigid solid core

Free of harmful content, waterproof, extra stable and sound absorbent.

④ Locking system

For easy installation.

⑤ 1.5mm acoustic underlay

For ultra comfortable noise free use.

SPECIFICATIONS

Board dimensions: 1,830mm x 228mm

Pieces per carton: 6

Area per carton: 1.67m²

Wear layer: 0.5mm

Surface: Multi-layer Quartz enhanced PUR coating

Slip Resistance: P3

Thickness: 7mm





Switch colour and room image can differ due to light conditions. Refer to page 2.

Enhance the style of your home.

Abode Grace hybrid flooring comes in beautiful designs that will perfectly complement your interior. Each are water resistant and built tough to resist the wear and tear of a bustling household.

CURRENT COLLECTION



ALPINE
GREY ASH



BLACKBUTT



BLEACHED
BLACKBUTT



MOONLIGHT
GUM



NATIVE OAK



SANDBLASTED
BLACKBUTT



SPOTTED GUM



STONEWASHED
SPOTTED GUM



WARM URBAN OAK

HOW IT'S MADE



① UV Coating.

② Wear layer (0.5mm)
Excessive wear protection

③ Decor film
Wide color selection

④ SPC core (4.5mm)
Waterproof core made of highly durable SPC
Density of 2000KGS/M³
Strong locking system

⑤ IXPE Underlay (optional - 1.5mm)
Advanced sound reduction
Added comfort

SPECIFICATIONS

Board dimensions: 1,500mm x 180mm
Pieces per carton: 6
Area per carton: 1.62m²

Wear layer: 0.5mm
Slip Resistance: P3
Thickness: 6mm

ABODE GRACE
Design Featured:
Warm Urban Oak





Switch colour and room image can differ due to light conditions. Refer to page 2.

A superior benchmark in Hybrid flooring.

Abode Grande is sophisticated in style and with its beautiful colour hues, quality and ease of installation, its the perfect flooring solution for your home. It's innovative core technology offers quick and easy installation while hiding subfloor imperfections.

CURRENT COLLECTION



ACACIA
OAK



CAMELLIA
OAK



LAUREL BAY
OAK



MAGNOLIA
OAK



MIMOSA
OAK



MURRAY
BLACKBUTT



MYRTLE
BLACKBUTT



NOBLE
OAK

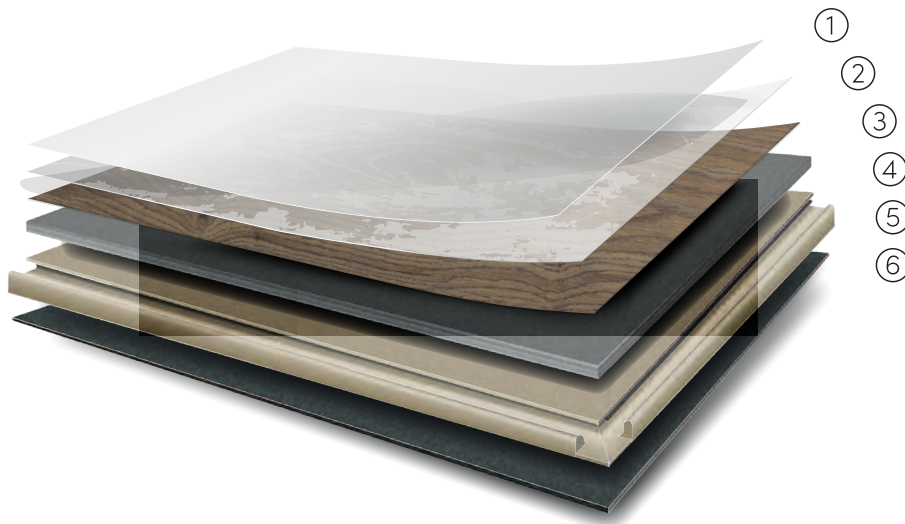


ORANGE
SCENTED GUM



WILLOW
OAK

HOW IT'S MADE



① Surface protection

Surface protection system uses PU technology to provide a hygienic and durable finish.

② Clear PVC embossed wear layer

Provides superior protection from everyday wear and tear.

③ High definition photographic layer

Showcasing the unique design of each product; handcrafted for one of a kind beautiful floors.

④ Core

⑤ 5G Locking mechanism

Using a single action installation method, the 5G mechanism allows the installer to quickly click and lock planks together.

⑥ Acoustic backing

Pre-attached acoustic foam backing makes it quieter to walk on than laminate floors and reduces noise transfer to rooms below.

SPECIFICATIONS

Board dimensions: 1,830mm x 228mm

Pieces per carton: 4

Area per carton: 1.67m²

Wear layer: 0.5mm

Surface: PU (Polyurethane)

Slip resistance: P3

Thickness: 7mm

ABODE GRANDE
Design Featured:
Orange Scented Gum



INDOOR JUNGLE

UNDECORATED
I DON'T HAVE A...



Switch colour and room image can differ due to light conditions. Refer to page 2.



Designed to inspire and built to perform.

Featuring superior core technology which offers easy installation and delivers a lifetime of durability, Abode Vibe leads the way in exciting, on-trend design..

CURRENT COLLECTION



ANTIQUE
BRUSHED OAK



BRUSHED
EUROPEAN OAK



CLASSIC
BLACKBUTT



FRENCH
LIMED OAK



NATURAL
BRUSHED OAK



OXFORD
OAK



PALE
OAK



SHADOW
ASH



SHORELINE
OAK



SMOKED
ASH



TIMELESS
OAK



VINTAGE
BUTTERNUT



HoldSafe® is a registered trademark of Karndean Designflooring

HOW IT'S MADE



① Karndean K-Guard+ surface protection
Our K-Guard+ surface protection system uses PU technology to provide a hygienic and durable finish.

② Clear PVC embossed wear layer
Provides superior protection from everyday wear and tear.

③ High definition photographic layer
Showcasing the unique design of each product; handcrafted for one of a kind beautiful floors.

④ Stability layer
This layer assists with dimensional stability and indentation resistance and recovery.

⑤ Karndean K-Core Technology
The Karndean K-Core technology ensures a stronger, more stable core for installation over most existing hard floors without the worry of exposing subfloor imperfections.

⑥ 5G® click-locking mechanism
Using a single action installation method, the 5G® click-locking mechanism allows the installer to quickly click and lock planks together.

⑦ Acoustic backing
Pre-attached acoustic foam backing makes rigid core products quieter to walk on than laminate or engineered hard floors, and reduces noise transfer to rooms below.

SPECIFICATIONS

Board dimensions: 1,420mm x 225mm

Pieces per carton: 10

Area per carton: 3.195m²

Wear layer: 0.5mm

Surface: PU (Polyurethane)

Slip resistance: R10

Thickness: 6.5mm

Bevel: Micro

Warranty:

Residential lifetime transferable

ABODE VIBE
Design Featured:
Oxford Oak





KEY FEATURES

	Abode Alpha	Abode Derwent	Abode Grace	Abode Grande	Abode Vibe
Allergy Friendly	✓	✓	✓	✓	✓
Anti-Slip	✓	✓	✓	✓	✓
Colour Fastness to Artificial Light			✓		
Durable	✓	✓	✓	✓	✓
Easy Cleaning	✓	✓	✓	✓	✓
Eco-friendly	✓	✓	✓	✓	✓
Exclusive to Choices Flooring	✓	✓	✓	✓	✓
Family Friendly	✓	✓	✓	✓	✓
Hard Wearing	✓	✓	✓	✓	✓
Low Maintenance	✓	✓	✓	✓	✓
Natural Fibre					
Pet Friendly	✓	✓	✓	✓	✓
Quiet Underfoot	✓	✓	✓	✓	✓
Rental Friendly	✓	✓	✓	✓	✓
Sound Absorption	✓	✓	✓	✓	✓
Stain Resistance	✓	✓	✓	✓	✓
Underfloor Heating Suitability	✓	✓	✓	✓	✓
Water resistant	✓	✓	✓	✓	✓

IF YOUR ABODE PRODUCT FAILS TO PERFORM...

Your selected ABODE product is covered by one or more warranties as stated in the warranty information. For more information on the applicable warranties or guarantees on your selected flooring, please check with your local Choices Flooring consultant, or for more information visit the warranty section of the product on www.choicesflooring.com



VIEW WARRANTY
BROCHURE ONLINE

*Warranties and guarantees are provided by the manufacturer and are in addition to other rights and remedies of the consumer under a law in relation to the goods. You are entitled to a replacement or refund for a major failure and compensation for any other reasonably foreseeable loss or damage.

You are also entitled to have the goods repaired or replaced if goods fail to be acceptable quality and the failure does not amount to a major failure. Variations in colour within the one reference can occur across all timber designs. Actual colour samples shown in this brochure may vary due to the printing process. View a true representation of the range at your local Choices Flooring store. All information is correct at the time of printing (September 2024).







ABODE GRANDE
Design Featured:
Splendid Oak



choicesflooring.com

JOIN OUR ONLINE COMMUNITY

