



[choicesflooring.com](http://choicesflooring.com)

*the abode*

COLLECTION

A U S T R A L I A

abode



## WHY CHOOSE ABODE?

Often referred to as rigid flooring or hybrid flooring, Abode is an evolution in hard flooring which has the visual appearance of timber, yet combines the best attributes of laminate and luxury vinyl.

Abode is quick and easy to install, with minimal to no subfloor preparation. It is exceptionally resistant to scuffs, scratches and stains, making it a perfect choice for those with busy households as it provides style and durability for everyday living.



*rigid/hybrid*

CHOICES

abode

2	Before You Buy
4	Abode Care & Maintenance Guide
9	Abode Alpha
13	Abode Avenue
17	Abode Coastal
21	Abode Derwent
25	Abode Elevate
29	Abode Grace
33	Abode Grande
37	Abode Prime
41	Abode Vibe
45	Abode Whispers
49	Key Features
48	Guarantees & Warranties

# BEFORE YOU BUY

Throughout this brochure you may notice a colour variation between the room and swatch images. Both are the best possible representation of that product within two different photographic environments. It is important to keep in mind that there are a number of variances in addition to lighting that may affect the way your hard flooring looks. This can include paint colour on walls, furniture and décor items that can alter the appearance of your floors.

## HOW LIGHTING AFFECTS THE LOOK OF YOUR FLOOR

Flooring is one of the biggest surface areas in your home and a key design element to any interior. When selecting your hard flooring, colour plays just as much of an important role as price, style and quality.

It is important to take into consideration how your selected hard flooring may look once it is installed in your home as the lighting in the room will have a significant impact on the way the colour is perceived.

For example, hard flooring that is laid in a room that receives little to no natural light will appear drastically different to a room that has a lot of natural light coming in. It will also appear different as the light changes throughout the day and transitions from morning to night.

## THE EFFECTS OF ARTIFICIAL LIGHTING

Natural sunlight is not the only lighting that has an impact on the colour of your hard flooring; the type of light fixtures you have in the room will also play a part in how the hard flooring will look in your room.

Indirect lighting, such as a wall bracket aims light toward ceilings or walls, whereas a lampshade or floor lamp has a wider spread of light, therefore the light displayed will rebound against walls and floor.

For the best representation, we recommend going into your local Choices Flooring store and request to take a sample of your desired colour home. In addition, take a sample that is a shade darker so you can compare the two shades in both natural and artificial light at various times throughout the day to ensure you are happy with the true colour of the product within your room.



The actual swatch appears most like the mid to dark sections of the room image.



Depending on the sheen and texture of the product, under natural light your flooring can appear drastically lighter.



Wall colour and furniture can appear to change the tone of your flooring due to colour reflection.

For more information, visit [choicesflooring.com](https://www.choicesflooring.com) or speak with your sales consultant at your local Choices Flooring store.

# ABODE CARE & MAINTENANCE GUIDE

Abode has been designed with low maintenance in mind, allowing you to spend more time doing the things you love. A key benefit of Abode flooring is how easy it is to clean, and with little maintenance, you can extend the life of your floor for years to come. The nature of the maintenance will depend on the amount and type of traffic in your home. A typical maintenance program for a standard home would be as follows:

## INITIAL TREATMENT

Maintain a temperature controlled environment between 18°C – 28°C and do not wash your new floor for at least 24 hours after installation. Sweep with a broom or vacuum to remove any grit and dirt. This will avoid scratching your floor prior to implementing the recommended maintenance schedule.

## REMOVING SCUFF MARKS

Scuff marks on surface areas are usually caused by dragging heavy items such as furniture or sliding shoes across the floor. These can be just wiped away with a damp cloth. If you are having difficulties removing scuff marks, add some eucalyptus oil to a damp cloth and wipe scuff marks to remove any residue.

## WEEKLY CARE

Sweep daily or as often as required with a broom or vacuum to remove any grit or dirt. At least twice a month, mop the entire floor with a pH neutral cleaning product. The minimum amount of water/liquid should be used to prevent moisture from penetrating into joints. Check with your Choices Flooring sales consultant which cleaning product is most appropriate for your floor.



For more information regarding the care & maintenance of your flooring, visit [choicesflooring.com](https://www.choicesflooring.com)



Swatch colour and room image can differ due to light conditions. Refer to page 2.





## The next evolution in flooring.

Boasting stunning timber designs that provide the flexibility to be installed throughout most of your home, embrace the next evolution in flooring with the Abode collection.

### FEATURED BRANDS





Swatch colour and room image can differ due to light conditions. Refer to page 2.



## Discover the new benchmark in flooring.

From modern grey hues to classic oaks, Abode Alpha has it all – style, durability and budget friendly, making it a great option for any home. It is an exceptional, solid-core plank designed to withstand up to 50° heat without lifting or warping. You can rest assured it will perform brilliantly in your home throughout the hottest summers.



BUNYIP BLACKBUTT



CALDWELL OAK



GILLII GUM



KINGLAKE OAK



TARKINE OAK



TONGRASS OAK

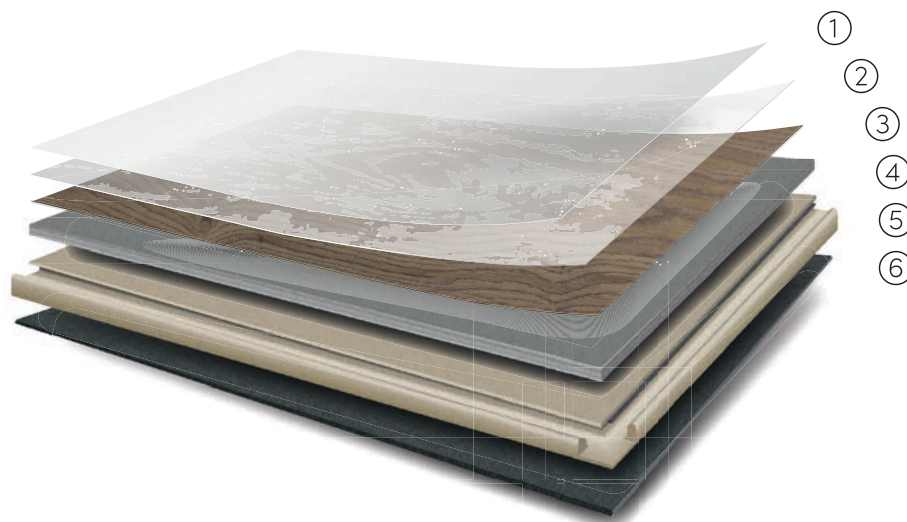


WANDELLA OAK



WAVERLEY OAK

## HOW IT'S MADE



### ① Surface protection

Surface protection system uses PU technology to provide a hygienic and durable finish.

### ② Clear PVC embossed wear layer

Provides superior protection from everyday wear and tear.

### ③ High definition photographic layer

Showcasing the unique design of each product; handcrafted for one of a kind beautiful floors.

### ④ Core

The binder in the core is composed of 100% PVC (no wood floor) to ensure stronger, more stable core for installation over most existing hard floors without the worry of exposing subfloor imperfections.

### ⑤ 5G® click-locking mechanism

Using a single action installation method, the 5G® click-locking mechanism allows the installer to quickly click and lock planks together.

### ⑥ Acoustic backing

Pre-attached acoustic foam backing makes it quieter to walk on than laminate floors and reduces noise transfer to rooms below.

## SPECIFICATIONS

Board dimensions: 1,520mm x 228mm

Pieces per carton: 6

Area per carton: 2.079m<sup>2</sup>

Wear layer: 0.5mm

Surface: PU (Polyurethane)

Slip resistance: P3

Thickness: 6mm





Swatch colour and room image can differ due to light conditions. Refer to page 2.

## Exceptional strength and stability hybrid flooring.

Abode Avenue offers exceptional strength and stability. Featuring Australian Species and Oaks, Abode Avenue delivers striking patterns that capture the essence of real wood.

### CURRENT COLLECTION



ALDAN OAK



DANUBE OAK



GRAMPIAN GUM



HIGH COUNTRY OAK



HIGHLANDS OAK



MURRAY SPOTTED  
GUM



NATURAL OAK



OMELO BLACKBUTT

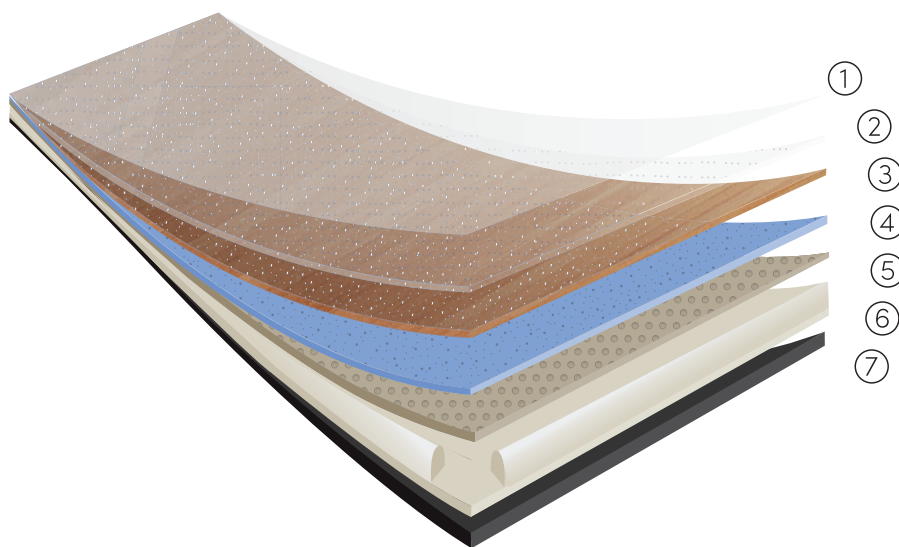


SMOKEY OAK



YARRA SPOTTED  
GUM

## HOW IT'S MADE



① Shielded surface protection  
Acts to enhance and protect the decor

② Clear embossed wear layer  
Protection from scuffing and scratches

③ HD photographic layer  
The design layer is rendered in high definition  
to offer visually stunning and unique floors

④ Stabilising LVT  
Provides dimensional stability

⑤ 5G click system  
Glueless install system, just drop, lock, and go

⑥ Infused Polymer Core  
Protects against water and moisture  
absorption, leaving the floor waterproof

⑦ Acoustic underlay  
Advanced sound reduction and comfort

## SPECIFICATIONS

Board dimensions: 1,524mm x 228mm

Pieces per carton: 6

Area per carton: 2.08m<sup>2</sup>

Wear layer: 0.5mm

Surface: PU (Polyurethane)

Slip resistance: P3

Thickness: 8mm

ABODE AVENUE  
Design Featured:  
Natural Oak







Swatch colour and room image can differ due to light conditions. Refer to page 2.

## Flooring that will highlight your home.

Abode Coastal boasts stunning timber designs that are versatile enough to be installed throughout most areas of the home and will uplift your home.

### CURRENT COLLECTION



BARCELONA



BYRON BAY  
SPOTTED GUM



CAMPARI



CRESCENT HEAD  
BLACKBUTT



HAVANA



MARGARET RIVER  
SPOTTED GUM

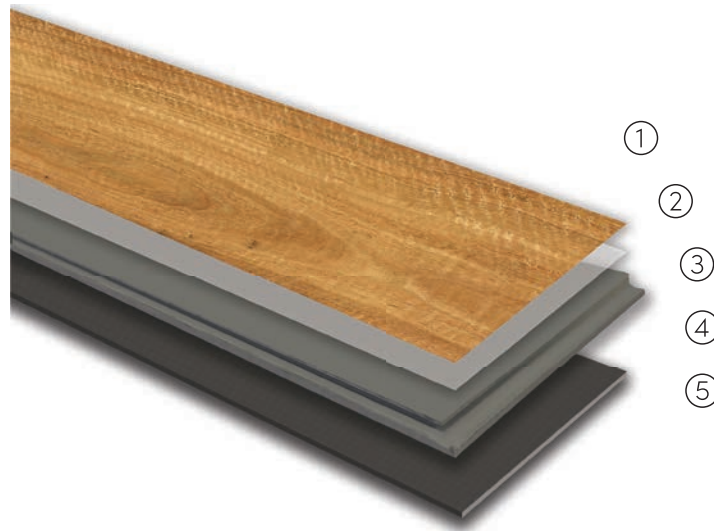


MESSINA



SARDINIA

## HOW IT'S MADE



① Commercial Grade Wear Layer  
A hard wearing surface with high impact resistance and natural wood embossing.

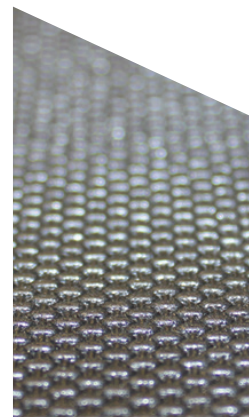
② High Definition Designs  
Available in a variety of natural colours with designs that are true to nature.

③ Click System  
Easy to assemble glueless high strength click system.

④ Limestone/PVC Composite Core  
Limestone/PVC Composite core which is 100% waterproof and provides outstanding impact resistance and durability. This unique formula enhances the strength under all temperatures whilst providing minimal expansion and contraction.

⑤ Acoustic Backing  
Every plank has a pre-adhered underlay for excellent acoustics and underfoot comfort. Beats the BCA (Building Code of Australia) minimum standards by 30%.

**Achieves 42 L'nTw Test Result.**



## SPECIFICATIONS

Board dimensions: 1,520mm x 228mm

Pieces per carton: 5

Area per carton: 1.733m<sup>2</sup>

Wear layer: 0.5mm

Slip Resistance: P3

Thickness: 6mm





Switch colour and room image can differ due to light conditions. Refer to page 2.

## A harmonious blend of elegance and durability.

Inspired by the picturesque landscapes of old English masters, this collection combines the best of both worlds – the natural timber beauty found in lush forests and the resilience of modern technology.

### CURRENT COLLECTION



BOWEN  
SPOTTED GUM



DELAMERE  
OAK



GISBURN  
OAK



KIELDER  
OAK



MARRON  
BLACKBUTT



MERCIA  
OAK



MERSEY  
OAK



MORTIMER  
OAK

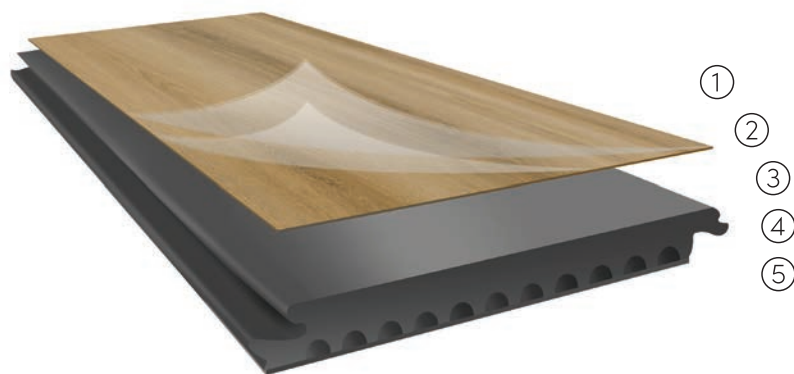


ST CLAIR  
BLACKBUTT



WELLINGTON  
OAK

## HOW IT'S MADE



- ① Multi-layer Quartz enhanced PUR coating  
Exceptional resistance to heavy foot traffic, indents, scratches and scuffs.
- ② Stunning photographic layer  
Super sharp images of the finest timber species for genuine timber appearance.
- ③ New extra dense rigid solid core  
Free of harmful content, waterproof, extra stable and sound absorbent.
- ④ Locking system  
For easy installation.
- ⑤ 1.5mm acoustic underlay  
For ultra comfortable noise free use.

## SPECIFICATIONS

Board dimensions: 1,830mm x 228mm  
 Pieces per carton: 6  
 Area per carton: 1.67m<sup>2</sup>  
 Wear layer: 0.5mm

Surface: Multi-layer Quartz enhanced PUR coating  
 Slip Resistance: P3  
 Thickness: 7mm







Swatch colour and room image can differ due to light conditions. Refer to page 2.

## A technology advanced hybrid.

Delivering durable and waterproof<sup>^</sup> flooring with exquisite design, Abode Elevate ticks all the right boxes. Available in a wide range of natural timber hues, you can enhance your home with strong, stable, and beautiful flooring that's easy to install.

<sup>^</sup>Subject to proper installation, maintenance, and local building code/regulatory approval.

### CURRENT COLLECTION



BLACKBUTT



BRONZE OAK



CARAMEL OAK



CASHEW OAK



DARK SPOTTED GUM



HAZEL OAK



KNIGHT OAK



PEARL OAK



SPOTTED GUM



STORM OAK

## HOW IT'S MADE



- ① The high grade PUR surface treatment provides scuff and stain resistance, making cleaning a breeze.
- ② PVC Wear layer provides a hard wearing surface with high impact resistance.
- ③ The decorative layer replicates the look of authentic hardwood flooring with high-definition imagery and wood grain embossing.
- ④ The trigon® composite core is codemark certified waterproof\*, with high degree of dimensional stability.
- ⑤ A pre-adhered acoustic underlay delivers improved acoustics and comfort underfoot as well as decreasing installation costs.

\*Subject to proper installation, maintenance, and local building code/regulatory approval.

## SPECIFICATIONS

Board dimensions: 1,200mm x 182mm

Pieces per carton: 10

Area per carton: 2.184m<sup>2</sup>

Wear layer: 0.3mm

Slip Resistance: P3

Thickness: 6mm





Swatch colour and room image can differ due to light conditions. Refer to page 2.



## Enhance the style of your home.

Abode Grace hybrid flooring comes in beautiful designs that will perfectly complement your interior. Each are water resistant and built tough to resist the wear and tear of a bustling household.

### CURRENT COLLECTION



AUGUSTA OAK



BLACKBUTT



BLEACHED  
BLACKBUTT



LIMESTONE ASH



LONG PLAINS OAK



SANDBLASTED  
BLACKBUTT



SPOTTED GUM



STONEWASH  
SPOTTED GUM

ABODE GRACE  
Design Featured:  
Augusta Oak

## HOW IT'S MADE



① UV Coating.

② Wear layer (0.5mm)  
Excessive wear protection

③ Decor film  
Wide color selection

④ SPC core (4.5mm)  
Waterproof core made of highly durable SPC  
Density of 2000KGS/M<sup>3</sup>  
Strong locking system

⑤ IXPE Underlay (optional - 1.5mm)  
Advanced sound reduction  
Added comfort

## SPECIFICATIONS

Board dimensions: 1,500mm x 180mm

Pieces per carton: 6

Area per carton: 1.62m<sup>2</sup>

Wear layer: 0.5mm

Slip Resistance: P3

Thickness: 6mm

ABODE GRACE  
Design Featured:  
Augusta Oak







Swatch colour and room image can differ due to light conditions. Refer to page 2.

## A superior benchmark in Hybrid flooring.

Abode Grande is sophisticated in style and with its beautiful colour hues, quality and ease of installation, its the perfect flooring solution for your home. It's innovative core technology offers quick and easy installation while hiding subfloor imperfections.

### CURRENT COLLECTION



ACACIA  
OAK



CAMELLIA  
OAK



LAUREL BAY  
OAK



MAGNOLIA  
OAK



MIMOSA  
OAK



MURRAY  
BLACKBUTT



MYRTLE  
BLACKBUTT



NOBLE  
OAK

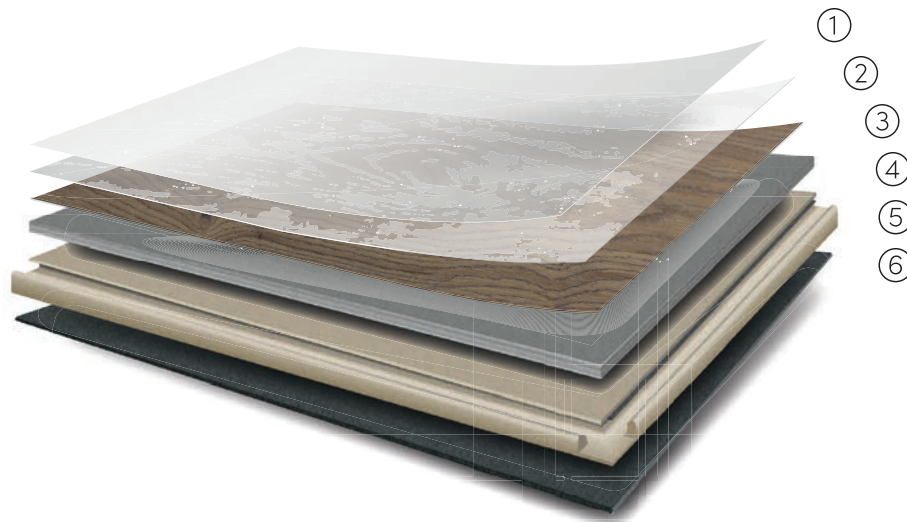


ORANGE  
SCENTED GUM



WILLOW  
OAK

## HOW IT'S MADE



### ① Surface protection

Surface protection system uses PU technology to provide a hygienic and durable finish.

### ② Clear PVC embossed wear layer

Provides superior protection from everyday wear and tear.

### ③ High definition photographic layer

Showcasing the unique design of each product; handcrafted for one of a kind beautiful floors.

### ④ Core

### ⑤ 5G Locking mechanism

Using a single action installation method, the 5G mechanism allows the installer to quickly click and lock planks together.

### ⑥ Acoustic backing

Pre-attached acoustic foam backing makes it quieter to walk on than laminate floors and reduces noise transfer to rooms below.

## SPECIFICATIONS

Board dimensions: 1,830mm x 228mm

Pieces per carton: 4

Area per carton: 1.67m<sup>2</sup>

Wear layer: 0.5mm

Surface: PU (Polyurethane)

Slip resistance: P3

Thickness: 7mm

ABODE GRANDE  
Design Featured:  
Orange Scented Gum





Swatch colour and room image can differ due to light conditions. Refer to page 2.

## Style and durability for everyday life.

Abode Prime flooring is exceptionally resistant to scuffs, scratches and stains, making it a perfect choice for busy family homes.

### CURRENT COLLECTION



BLACKBUTT



CHAMBERY



NSW SPOTTED GUM



PRAGUE



QLD SPOTTED GUM



VIENNA

## HOW IT'S MADE



① Multi-layer Quartz enhanced PUR coating  
Exceptional resistance to heavy foot traffic, indents, scratches and scuffs.

② Deep structured decorative layer  
The look and feel of a premium hardwood floor.

③ New extra dense rigid solid core  
Free of harmful content, waterproof, extra stable and extra sound absorbent.

④ Locking system  
For easy installation.

⑤ 1mm acoustic underlay  
For ultra comfortable noise free use.

## SPECIFICATIONS

Board dimensions: 1,524mm x 177.8mm

Pieces per carton: 6

Area per carton: 1.625m<sup>2</sup>

Wear layer: 0.55mm

Surface:

Multi-layer Quartz enhanced PUR coating

Slip Resistance: P3

Thickness: 6.0mm







Swatch colour and room image can differ due to light conditions. Refer to page 2.



## Designed to inspire and built to perform.

Featuring superior core technology which offers easy installation and delivers a lifetime of durability, Abode Vibe leads the way in exciting, on-trend design..

### CURRENT COLLECTION



ANTIQUE  
BRUSHED OAK



BRUSHED  
EUROPEAN OAK



CLASSIC  
BLACKBUTT



FRENCH  
LIMED OAK



NATURAL  
BRUSHED OAK



OXFORD  
OAK



PALE  
OAK



SHADOW  
ASH



SHORELINE  
OAK



SMOKED  
ASH



TIMELESS  
OAK



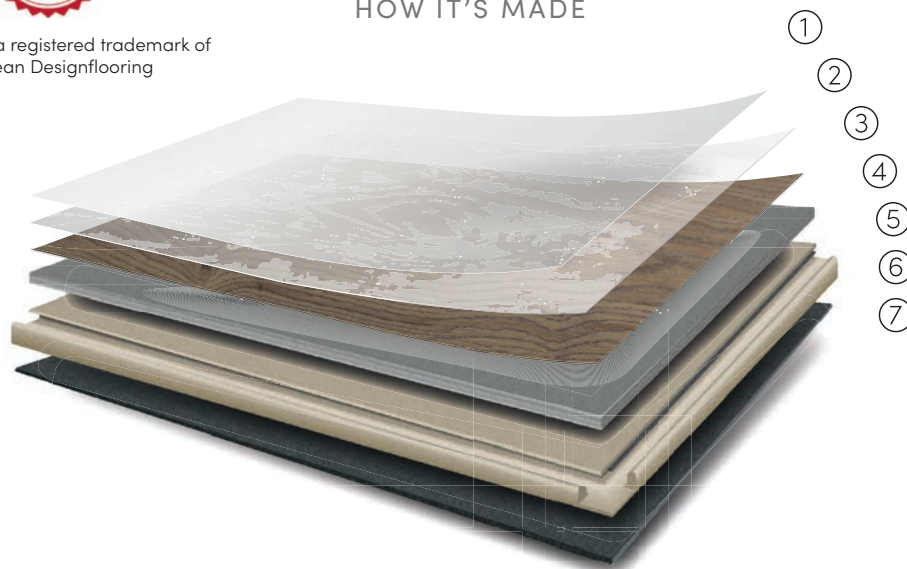
VINTAGE  
BUTTERNUT

ABODE VIBE  
Design Featured:  
Timeless Oak



HoldSafe® is a registered trademark of Karndean Designflooring

## HOW IT'S MADE



① Karndean K-Guard+ surface protection  
Our K-Guard+ surface protection system uses PU technology to provide a hygienic and durable finish.

② Clear PVC embossed wear layer  
Provides superior protection from everyday wear and tear.

③ High definition photographic layer  
Showcasing the unique design of each product; handcrafted for one of a kind beautiful floors.

④ Stability layer  
This layer assists with dimensional stability and indentation resistance and recovery.

⑤ Karndean K-Core Technology  
The Karndean K-Core technology ensures a stronger, more stable core for installation over most existing hard floors without the worry of exposing subfloor imperfections.

⑥ 5G® click-locking mechanism  
Using a single action installation method, the 5G® click-locking mechanism allows the installer to quickly click and lock planks together.

⑦ Acoustic backing  
Pre-attached acoustic foam backing makes rigid core products quieter to walk on than laminate or engineered hard floors, and reduces noise transfer to rooms below.

## SPECIFICATIONS

Board dimensions: 1,420mm x 225mm

Pieces per carton: 10

Area per carton: 3.195m<sup>2</sup>

Wear layer: 0.5mm

Surface: PU (Polyurethane)

Slip resistance: R10

Thickness: 6.5mm

Bevel: Micro

Warranty:

Residential lifetime transferable

ABODE VIBE  
Design Featured:  
Oxford Oak





Swatch colour and room image can differ due to light conditions. Refer to page 2.

## Indulge in the luxury of Abode Whispers.

Abode Whisper is a hybrid plank that redefines your flooring experience. With its unique soft-touch wear layer, each step becomes a whisper of elegance, turning your space into a haven of comfort.

### CURRENT COLLECTION



MINERAL OAK



MYSTIC MALLEE



PEARL OAK



RAPIDS OAK



SANDHILL SILK



SUNRISE ECHO



SWEET WALNUT



TREEHOUSE TREK

## HOW IT'S MADE



① Multi-layer Quartz enhanced PUR coating.

Exceptional resistance to heavy foot traffic, indents, scratches and scuffs.

② The wear layer.

Super sharp images of the finest timber species for genuine timber appearance.

③ New extra dense rigid solid core.

Free of harmful content, waterproof, extra stable and sound absorbent.

④ Locking system for easy installation.

⑤ 1.5mm acoustic underlay for ultra comfortable noise free use.

## SPECIFICATIONS

Board dimensions: 1,524mm x 230mm

Pieces per carton: 5

Area per carton: 1.75m<sup>2</sup>

Wear layer: 0.5mm

Surface:

Multi-layer Quartz enhanced PUR coating

Slip Resistance: P3

Thickness: 6.5mm





## IF YOUR ABODE PRODUCT FAILS TO PERFORM...

Your selected ABODE product is covered by one or more warranties as stated in the warranty information. For more information on the applicable warranties or guarantees on your selected flooring, please check with your local Choices Flooring consultant, or for more information visit the warranty section of the product on [www.choicesflooring.com](http://www.choicesflooring.com)



VIEW WARRANTY  
BROCHURE ONLINE

\*Warranties and guarantees are provided by the manufacturer and are in addition to other rights and remedies of the consumer under a law in relation to the goods. Our goods come with guarantees that cannot be excluded under the Australian Consumer Law. You are entitled to a replacement or refund for a major failure and compensation for any other reasonably foreseeable loss or damage.

You are also entitled to have the goods repaired or replaced if goods fail to be acceptable quality and the failure does not amount to a major failure. Variations in colour within the one reference can occur across all timber designs. Actual colour samples shown in this brochure may vary due to the printing process. View a true representation of the range at your local Choices Flooring store. All information is correct at the time of printing (September 2024).

## KEY FEATURES

	Abode Alpha	Abode Avenue	Abode Coastal	Abode Derwent	Abode Elevate	Abode Groce	Abode Grande	Abode Prime	Abode Vibe	Abode Whispers
Allergy Friendly	✓	✓	✓	✓	✓	✓	✓	✓	✓	✓
Anti-Slip	✓	✓	✓	✓	✓	✓	✓	✓	✓	✓
Colour Fastness to Artificial Light			✓		✓	✓		✓		
Durable	✓	✓	✓	✓	✓	✓	✓	✓	✓	✓
Easy Cleaning	✓	✓	✓	✓	✓	✓	✓	✓	✓	✓
Eco-friendly	✓		✓	✓		✓	✓	✓	✓	✓
Exclusive to Choices Flooring	✓	✓	✓	✓	✓	✓	✓	✓	✓	✓
Family Friendly	✓	✓	✓	✓	✓	✓	✓	✓	✓	✓
Hard Wearing	✓	✓	✓	✓	✓	✓	✓	✓	✓	✓
Low Maintenance	✓	✓	✓	✓	✓	✓	✓	✓	✓	✓
Natural Fibre										
Pet Friendly	✓	✓	✓	✓	✓	✓	✓	✓	✓	✓
Quiet Underfoot	✓	✓	✓	✓		✓	✓	✓	✓	✓
Rental Friendly	✓	✓	✓	✓	✓	✓	✓	✓	✓	✓
Sound Absorption	✓	✓	✓	✓	✓	✓	✓	✓	✓	✓
Stain Resistance	✓	✓	✓	✓	✓	✓	✓	✓	✓	✓
Underfloor Heating Suitability	✓	✓	✓	✓	✓	✓	✓	✓	✓	✓
Water resistant	✓	✓	✓	✓	✓	✓	✓	✓	✓	✓



choicesflooring.com

JOIN OUR ONLINE COMMUNITY

