

MOO



WINDOW FURNISHINGS

by CHOICES FLOORING



A U S T R A L I A



Choices
Flooring

choicesflooring.com



Decorating from the floor up

With the latest in colour, design and texture, Choices Flooring's exclusive range of window furnishings are the perfect addition to your interior.

At Choices Flooring, our window furnishings are made to measure, offering a beautifully customised fit specifically for your home.

Their benefits make them a sound investment that will add value to your home. Window treatments don't just help control light and privacy, they can transform the look of a space and help you set a mood.



MOO 
WINDOW FURNISHINGS
by CHOICES FLOORING



contents

roller blinds	5
roman blinds	7
venetian blinds	9
panel glides	11
vertical blinds	13
shutters	15
honeycell blinds	17
curtains	19
care & maintenance	25



ROLLER BLINDS

Affordable
Easy to clean

Low maintenance
Sleek and
contemporary

Motorisation options
Block out and
sunscreen options

Roller blinds

Roller blinds are amongst the most popular and affordable window furnishings available - delivering a sophisticated, contemporary look that accents and complements any décor. Roller blinds are available in a range of sheer, translucent and blackout finishes.

They can also be used as a dual application, to provide a 24 hour solution to privacy and light control.

Popular colours



(over 100 colours available)

Accessories



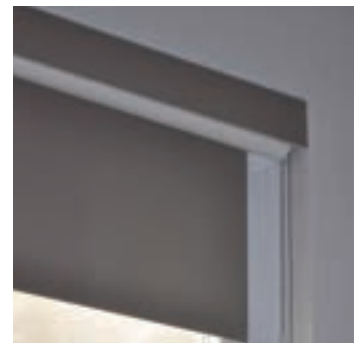
motorisation options



valances



bonded pelmets



box cassette
(with side channel)
and wire guides



ROMAN BLINDS

Functional and decorative

Easy to clean

Total privacy when closed

Low maintenance

Reduces power costs

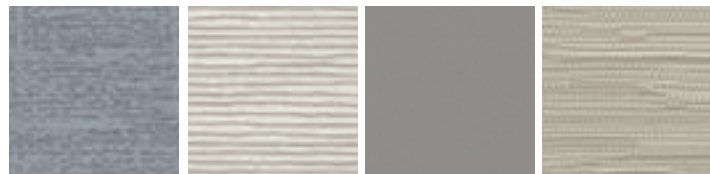
Motorisation options

Roman blinds

Roman blinds are available in a selection of high-fashion designs, meaning it's simple to create an elegant, sophisticated and stylish interior. Roman blinds are also available in a range of sheer, translucent and block out finishes and designed with clean horizontal folds that stack neatly, adding a distinctive touch to any room.

With the functionality of roller blinds and the decorative impact of soft furnishings, roman blinds are a stylish solution to any home.

Popular colours

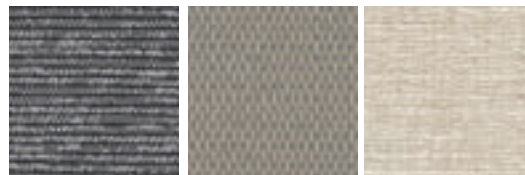


ENERGETIC
Cyrix

BLISSFUL
Putty

HOPEFUL
Pewter

LE REVE
Sand



BLISSFUL
Steel

TRANQUIL
Chamois

JEALOUS
Paperbark

(over 100 colours available)

Accessories



motorisation options



chain operated



VENETIAN BLINDS

Excellent light control
Affordable price point

Stylish and functional
Easy to clean

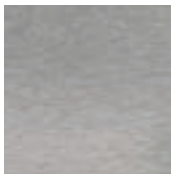
Motorisation options
Great alternative
to shutters

Venetian blinds

Venetian blinds allow excellent light control, ventilation and privacy at an affordable price point.

From the durability of aluminium to the style and functionality of timber, we're sure you will find the perfect window furnishing option for your home.

Available in



Aluminium

25mm can go between glass

20% thicker than the industry standard

All cords are single, not joined for child safety



Purewood

A range of contemporary colours, rustic wood grains and sophisticated high gloss finishes are available



Visionwood

Ideal for high humidity areas - bathrooms and kitchens

Accessories



motorisation options



PANEL GLIDES

Affordable price point

Easy to use

Excellent light control

Easy to clean

Ideal for full windows
and sliding doors

Panel glides

Designed as a modern alternative to vertical blinds, panel glides combine the elegance of curtains with the functionality of blinds.

The fabric panels move effortlessly through multiple tracking channels with the use of a smooth operating wand, eliminating the need for chains and safety devices, while enhancing the sleek elegance of this simplistic blind.

Popular colours



(over 100 colours available)



VERTICAL BLINDS

Affordable

Extremely versatile

Excellent light control

Easily cleaned

Ideal for full windows
and sliding doors

Vertical blinds

Vertical blinds assist in creating an illusion of increased height to any room. With an affordable price tag, ease of functionality and maintenance, vertical blinds are ideal for both residential and commercial spaces.

Privacy and light are easily controlled with chain or wand options to rotate vanes up to 180° when closed and rapidly open to stack neatly for maximum viewing capacity.

Popular colours



(over 30 colours available)



SHUTTERS

Easy to clean
Low maintenance

Reduces power costs
Motorisation options

Excellent light
control and airflow

Shutters

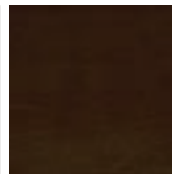
Adding a sense of space to any home, shutters provide total privacy from the outside world yet still allow for light and airflow through their adjustable louvres.

Shutters are the perfect option if you're seeking coverage for doors and windows or something to divide your space.

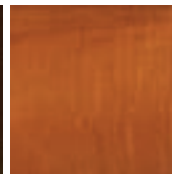
Popular colours



PVC
Ivory

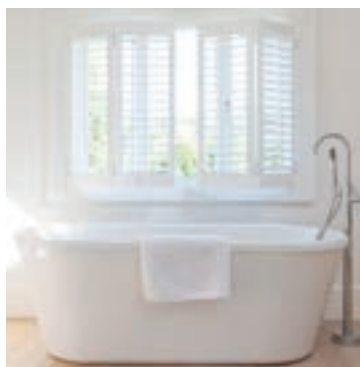


BASSWOOD
Walnut



BASSWOOD
Cherry

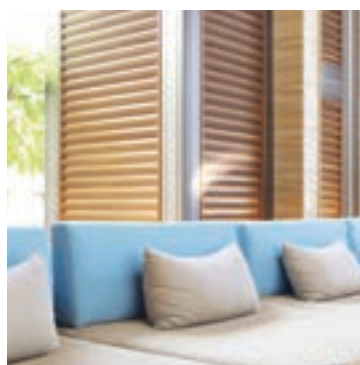
(over 20 colours available)



PVC shutters

Ideal for high humidity areas - bathrooms and kitchens

Allergy friendly



Basswood shutters

Three different louver widths available



HONEYCELL BLINDS

Sleek and contemporary
Blockout and Light Filtering
options available

Different configuration
options including Standard/
Bottom up, Top Down/
Bottom Up and
Tension/Skylight

On-trend colours available
in both light filtering and
blockout

Honeycell blinds

Create a striking look with a combination of design and the exceptional structure of Honeycell fabrics.

The MOOD Honeycell is a cellular blind, available in both blackout and light filtering. The Honeycell traps air within each cell, creating an effective insulation barrier.

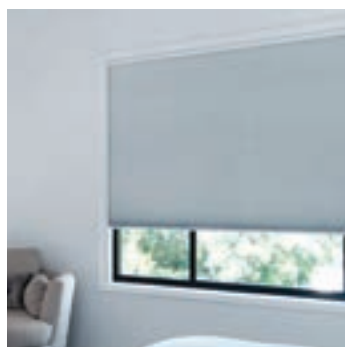
The metalised lining within the blackout cells provides superior insulation, keeping the home warmer in Winter and cooler in Summer. With no visible holes this also makes this blind an ideal option where complete room darkening is required, such as bedrooms and theatre rooms.

The neutral colour palette of the light filtering blind adds a lovely ambience to your décor while still allowing light, privacy and insulation for your home.

Accessories



ability to put into skylights



vertical & day/night shade



patio door



CURTAINS

Light control or complete privacy

UV protection for furniture & flooring

Great thermal and sound insulation for cooler homes in summer and warmer homes in winter

Various fabric, colour, transparency, finish, control type and accessories

Add value to your home

Curtains

Whether you're looking for a soft sheer curtain, a sheer curtain with block out lining or a blackout curtain, custom made curtains define the interior design of a room and have a host of practical and visual benefits which allow you to have complete control over your homes environment and design.

When you purchase your MOOD curtains you are investing in the highest quality service and materials. From the design process to installation, we will ensure your curtains will stand the test of time.

We use the top of the line hardware systems which are world renowned for their quality and ease of use.

Curtains can create the most amazing visual impact in your home.

- Shape and frame your windows
- Add warmth, movement, texture and softness
- Add illusion of height to rooms
- Frame and enhance the outside view or block an unsightly view

Popular colours



(over 100 different fabric and colour combinations available)



CURTAINS

Types of curtains

Sheer curtains

Sheer curtains float beautifully across windows to diffuse sunlight and soften the space. They let in the daylight and provide daytime privacy making them perfect to use in a layered window solution – such as with a blackout curtain behind or a blackout blind. Closing sheer curtains during the day can significantly reduce the effects of the sun, whilst still allowing a diffused light into the home.

Sheer curtains enhance the ambience of a room by adding movement and texture. You can operate your curtains with a wand, by hand, with a cord or with a remote controlled motor.

Blockout curtains

Blockout curtains provide excellent light control, privacy + reduce outside noise levels, allowing you to have complete control over your environment depending on the occasion + your mood. Our curtains can preserve up to 20% of the total heat in your home, creating a trapped layer of air between the fabric + the window, which results in an insulating air pocket. Studies demonstrate that curtains made from blackout fabric can reduce heat gains by 33%.

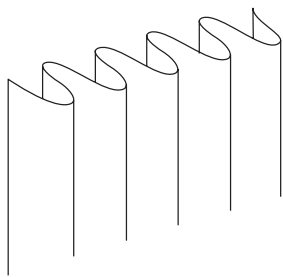
Double curtains

Double curtains are blackout and sheer curtains combined, offering all the practical and visual benefits of sheer and blackout curtains. One for day and one for night, with separate control of each curtain.

Headings for curtains

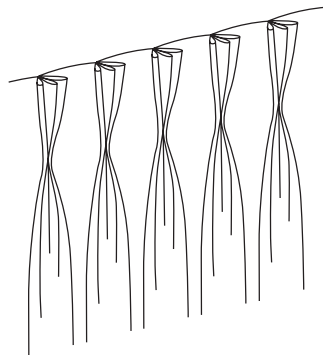
The heading style of your curtain – the way they're sewn at the top – affects how they fall. This determines how they look in a room, and how compactly they stack when opened.

The styles we offer are:



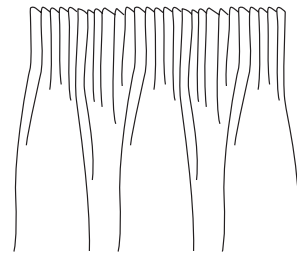
Wave or S-Fold

A sleek, casual and contemporary style with no pleating. The fabric folds in an "S" formation in front and behind the track. This style tends to require more stacking room than other heading styles.



Double or Triple Pinch Pleat

A double or triple pinch pleat is better suited to classic interiors. The bulk of the pleat is at the front of the heading with two or three neatly pinched folds 100mm from the top of the curtain.



Pencil Pleat

Pencil Pleat curtains feature folds of fabric that are tightly gathered at the top which resembles a line of pencils. Because of the tight folds of the header, the fabric flows freely to the floor. This is a great option, as curtain width can be adjusted/gathered more or less to fit a range of home styles from contemporary to classic.

Curtain Lengths

There are no hard and fast rules on the correct curtain length – it really comes down to personal preference. Many designers like to specify curtains so they're longer or "puddling" on the floor. This looks very elegant but can be a high-maintenance option if installed on tiled, timber or laminate floors because they drag on the surface of the floor and can gather dirt and dust on the hems. An ideal curtain length is 10 millimetres off the floor. This creates a neat look and holds its shape well.

Hanging Height

The best spot to hang a curtain track depends on your window and the height of the ceiling. In homes with lower ceilings, tracks just below the cornice can give the illusion of height. In homes with higher ceilings, you can hang them anywhere you like, whether it's just above the architrave, halfway between the architrave and the ceiling or under the cornice. However, the higher you can mount your curtains the better, this will make the window feel grander and the ceiling higher.

If you can, think about your window treatments early in the build or renovation. This will allow you to build in pelmets or install flush-mounted curtain tracking during construction and any wiring for automation into the desired locations. Where possible, run the curtains beyond the window so they don't block the light when opened. That will also give the room a sense of depth and grandeur.

Motorisation

Love the idea of opening or closing your curtains at the touch of a button or from your smart phone? If so, consider automating your curtains. One of the reasons why automation has sky-rocketed is the quality of lithium rechargeable batteries. That means that most window treatments can now be motorised affordably. Automating window treatments is also a clever way to eliminate unsightly cords and chains and makes operating window treatments on hard-to-reach windows a breeze.



CARE & MAINTENANCE

A guide to cleaning and looking after
your window furnishings

Care & maintenance

Roller blinds

To clean roller blinds, start by pulling them down so they're fully extended. Then, use a vacuum with a brush attachment to remove any dust and debris on the blinds. Once you've gone over the blinds with the vacuum, depending on the fabric, you can then use a damp (not wet) sponge or dish towel to wipe them off with lukewarm soapy water (check instructions on the reverse of the fabric swatch).

Roman blinds

To clean roman blinds, start by pulling them down so they're fully extended. Then, use a vacuum with a brush attachment to remove any dust and debris on the blinds, taking particular care in the creases or where the battens sit. Once you've gone over the blinds with the vacuum, depending on the fabric, you can then use a damp (not wet) sponge or dish towel to wipe them off with lukewarm soapy water (check instructions on the reverse of the fabric swatch).

Honeycell Blinds

Like any blinds, the honeycell style will eventually gather dust and general house hold debris over time. Using a feather duster or soft dry cloth is an easy way to remove dust particles. Alternatively, a hairdryer set on cold is a great way to blow out the cobwebs and get your honeycell blinds back to their best. A vacuum cleaner with dusting attachment (make sure you're using a low power setting) will do the trick, too.

You can also spot clean your honeycell blinds. Try to treat the fabric both carefully and gently whenever you're spot cleaning it. Use a damp plain-white cloth with a very mild detergent, and gently 'dab' at the affected area. Harsh rubbing will remove the stiffness and possibly even colour of the fabric, and can also distort its surface. Try to ensure that you don't crease the fabric throughout the cleaning process. Occasionally, insects may get trapped inside your blind cells. Again, grab a hairdryer set to cold (or similar), or vacuum cleaner, and you can easily blow out any bugs that may have perished.

Care & maintenance

Aluminium Venetians

To clean an Aluminium Venetian Blind, simply apply the same steps for the Visionwood Venetian Blind (see below). Aluminium Venetian Blinds can also be taken down out of their brackets and thoroughly cleaned in a bathtub. Simply fill a bathtub with clean water and clean each slat with a sponge. Ensure the blinds are rehung and left in the open position to allow them to dry completely before using again.

Visionwood Venetians

Start by tilting the Venetian Blind slats in the upwards position and grab either a feather duster or a dry cloth and run the cloth or duster across the slats. Repeat this process and tilt the slats into the downward position. Once you have dusted off the slats, fill up a bucket with fresh water and dampen a clean cloth. Again, tilt the slats into the upward position and working left to right, starting from the top, clean each slat individually. Repeat this process and tilt the slats into the downward position. Next, tilt the slats into the open position and again run the cloth along each individual slat. Remember to consistently rinse your sponge and change the water when required. Finally, leave the slats in the open position until completely dry to prevent the build-up of mould or mildew.

Purewood Venetians

As Timber (Purewood) Venetian Blinds are a natural product, they need to be taken care of to ensure the life of the blind can be prolonged.

Start by giving the Timber Venetian Blind a dust over. Tilt the slats up and then down, using a feather duster to give a light dusting. This is an easy cleaning technique that can be done weekly to prevent the build-up of dust. This will also help to make a deep clean of the blind easier. For a deeper clean, use the soft brush head on the vacuum and run it along the slats. Due to the nature of the Timber Venetian Blind, avoid getting the blind wet and do not use any harsh chemicals on the slats. If you do have any stubborn dirt or dust, use a damp (not wet) microfibre cloth to remove any build up on the slats.

TIP: Put your hand inside a sock and wrap your hand around each individual slat. Run your hand along each individual slat, cleaning both the back and the front of the slat at one time. It is an easy and great way to do a deep dusting for each slat.

Panel glides

Dusting with a feather duster or the brush attachment of your vacuum. is all that is required to keep your Panel Glide looking good. For the removal of dirt and grime, simply wipe fabric panels with a damp (not wet) sponge soaked in lukewarm water. If marks are still visible add a little mild detergent. Then dry gently with a clean cloth.

Vertical blinds

You can clean fabric vertical blinds without removing the vanes. Lift away dust by sweeping down the fabric with the brush attachment of your vacuum while supporting the vane from behind with your hand. To remove stains, you can spot clean with a damp (not wet) microfibre cloth and warm, soapy water.

PVC Shutters

Internal PVC Shutters are easy to clean and maintain. Over time your shutters will collect dust. As shutters don't blow around in the breeze or move when handled, they can be simply wiped down like you would a piece of furniture.

A micro fibre 'anti static' cloth or glove is ideal. Otherwise a damp cloth to collect the dust with a quick wipe should be sufficient.

Basswood Shutters

Real timber shutters, painted or stained, should be kept dry at all times. If wet from a window left open. Dry off with a towel as soon as possible. Continued exposure to water or steam can damage or alter the timber. Do NOT use any kind of water or soap. Dust with a dry micro fibre cloth.

Curtains

Remove hooks, rings and trims before cleaning. Vacuum your sheer drapes with a brush attachment before taking them down if they've been hanging for a while. Set the vacuum to the lowest suction possible.

Warm hand wash. Do not bleach. Do not rub or wring. Drip dry in the shade. For best results hang curtains by their hooks to damp dry immediately. Use warm iron. Dry clean drapes with "dry-clean only" tags. Attempting to wash them can ruin them. Never wash drapes in hot water or put them in the dryer, as this can cause them to shrink.

Care & maintenance

External Products – Awnings

Canvas, Acrylic & Mesh Care Instructions for Componentry Retract awnings in strong winds and or heavy rain. Only pitch awnings when extended half way making sure the awning is level. Always clean hardware of awning to prevent corrosion. Spray joints and all working parts with an anti-corrosive, lubricant spray. For electronic awnings with a sun and wind sensor, always check that wind sensor is clear of all debris and able to rotate freely. Protect motors with a box or cassette.

Care Instructions for Fabric

Avoid rolling up the fabric when wet. Roll up your awning in windy or stormy weather. If your awning does get wet, roll out fully to dry as soon as possible. Do not allow dirt, leaf litter, bird droppings to remain on fabric. Hose the canvas on a hot dry day to remove any dust or grime. Occasionally extend the awning fully down to even out the material. Re-coat annually with a water repellent treatment. Some shrinkage over time is normal as canvas contains cotton. Avoid pools of water from lying on the fabric. Cleaning should be done by lightly sponging

with warm water and a mild natural soap, rinse thoroughly to remove soap. Do not scrub the fabric. Do not use soap powder, concentrated soaps, detergents or cleaning fluids. Remove dust by brushing the fabric with a soft bristle brush. An occasional hosing will remove any dust and ingrained dirt.

NEVER scrub at the fabric and never use soap, bleach, solvents or cleaning fluids as these may damage the coating on the fabric. Extensive cleaning of canvas over a period of time may affect the fabric's ability to repel water, resulting in the need to reproof with a mildew inhibited wax based agent. Store, pack or roll up the fabric only when the blind is dry as moisture and dirt can encourage mould growth regardless of the fabric's composition.

CAUTION: NEVER LEAVE AWNINGS DOWN IN STRONG WINDS Awnings are not designed to take strong winds as they are used for shade and for keeping your house cooler in summer.

For more information regarding the care & maintenance of your window furnishings, visit choicesflooring.com



MOO

WINDOW FURNISHINGS
by CHOICES FLOORING

All product features and research included within this brochure have been provided by the manufacturer. Our goods come with guarantees that cannot be excluded under the Australian Consumer Law. You are entitled to a replacement or refund for a major failure and compensation for any other reasonably foreseeable loss or damage. You're also entitled to have the goods repaired or replaced if goods fail to be acceptable quality and the failure does not amount to a major failure. Actual colour samples shown in this brochure may vary due to the printing process. View a true representation of the range at your local Choices Flooring store. All information is correct at the time of printing (April 2023).

CF_0333

JOIN OUR ONLINE COMMUNITY



choicesflooring.com